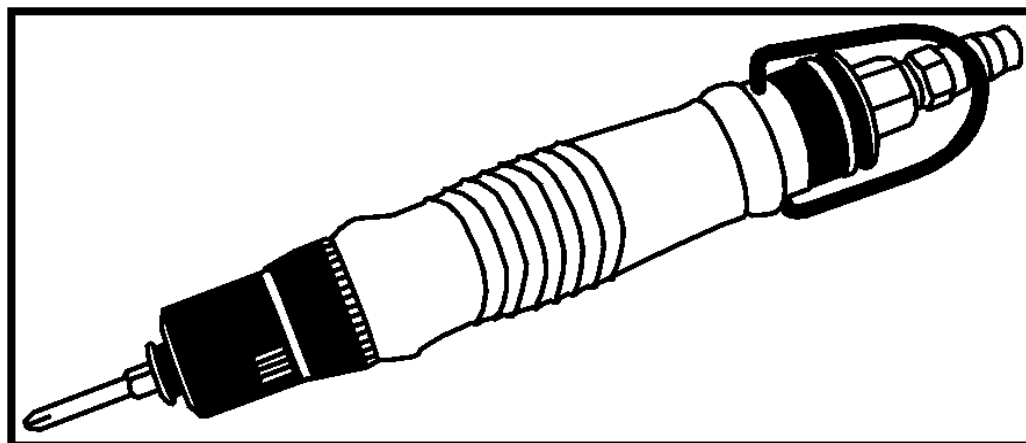


CE

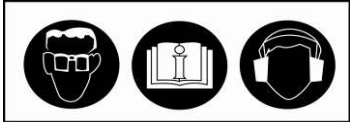
SUMAKE®

PNEUMATIC
TOOLS



**Full-Auto Shut Off Air Composite Screwdriver
CP**

Test results according to EN 792-6:2000+A1:2008

MODEL	Vibration EN 28662-1 & EN ISO 28927-2	Noise : EN ISO 15744:2008		Safety instructions
		Sound pressure level		
CP10	Load: 0.4 m/s ²	8 dB(A)		1- Read this manual and understand all safety instructions before operating the tool 2- Wear an approved ear-protector and gloves while operating the tool 
CP20	Load: 0.9 m/s ²	75 dB(A)		
CP30	Load: 0.9 m/s ²	75 dB(A)		
CP35	Load: 0.9 m/s ²	75 dB(A)		
CP38	Load: 0.9 m/s ²	75 dB(A)		
CP40	Load: 0.9 m/s ²	75 dB(A)		
CP45	Load: 1.1 m/s ²	73 dB(A)		
CP48	Load: 0.8 m/s ²	77dB(A)		
CP50	Load: 0.8 m/s ²	77dB(A)		
CP55	Load: 1.0 m/s ²	76dB(A)		
CP60	Load: 0.9 m/s ²	77dB(A)		
CP65	Load: 0.9 m/s ²	77dB(A)		

EC DECLARATION OF CONFORMITY FOR MACHINERY

Manufacturer: SUMAKE INDUSTRIAL CO.,LTD.

Address: 4F,-NO. 351, YANGGUANG ST., NEIHU DISTRICT
TAIPEI CITY 114, TAIWAN

**Herewith declares
that :**

**CP10(20)(30)(35)(38)(40)(45)
CP48(50)(55)(60)(65)
Full-Auto Shut Off Air Composite
Screwdriver**

- is in conformity with the provisions of the Machinery Directive (Directive 2006/42/EC), as amended, and with national implementing legislation:

- and have been tested according to:

EN ISO 12100-1:2003/A1:2009, EN ISO 12100-2:2003/A1:2009
EN 792-6:2000+A1:2008

Taipei, Taiwan Apr. / 2 / 2010



.....
Signature

MIKE SU

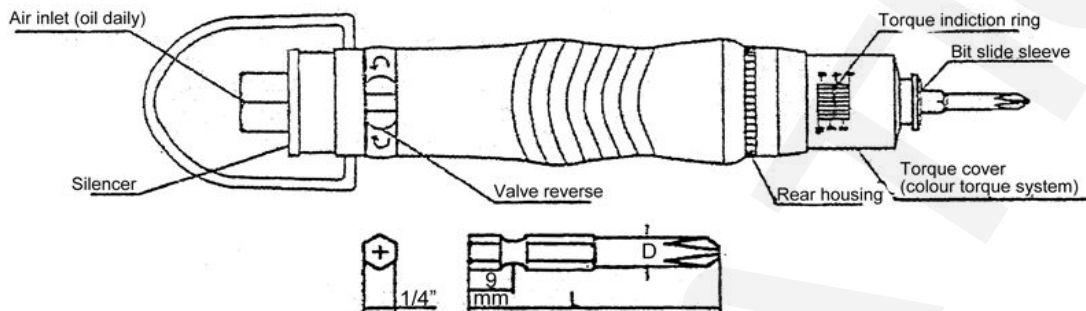
.....
Full name

CP Air Screwdrivers Operator's Manual



WARNING!

For safe use, Please Follow the instructions. The operation without your local regulations may cause serious injury. Read thoroughly and understand this instruction manual and keep this within reach for future reference.



CLASSIFIED CAPACITY SPECIFICATIONS

Model	Free speed	Weight	Overall length	Dia.	Air pressure	Min. air hose bore	Air consumption	Torque range	Standard deviation	Fastening capacity	
	r.p.m.									g	mm
CP10	1000	480	180	31	6,0	5,0	0,20	0,5-2	±3	M1,0-M2,2	M1,1-M1,7
CP20	1000	480	180	31	6,0	5,0	0,20	1-8	±3	M1,7-M3,3	M1,3-M2,7
CP30	1800	480	180	31	6,0	5,0	0,28	3-17	±3	M2,2-M4,2	M1,7-M3,2
CP35	2200	480	180	31	6,0	5,0	0,28	3-20	±3	M2,4-M4,5	M2,0-M3,5
CP38	1800	480	180	31	6,0	5,0	0,28	3-25	±3	M2,2-M4,4	M1,6-M3,4
CP40	1000	480	180	31	6,0	6,35	0,28	5-30	±3	M2,8-M5,0	M2,3-M4,0
CP45	800	450	180	31	6,0	8,0	0,30	8-40	±3	M3,0-M5,7	M2,7-M4,7
CP48	1800	790	215	39	6,0	8,0	0,55	5-45	±3	M2,8-M5,8	M2,3-M4,7
CP50	1400	790	215	39	6,0	8,0	0,55	7-50	±3	M2,9-M6,0	M2,6-M4,9
CP55	1000	790	215	39	6,0	8,0	0,55	7-65	±3	M2,9-M6,4	M2,6-M5,4
CP60	550	790	215	39	6,0	8,0	0,55	15-95	±3	M4,1-M7,0	M3,3-M6,0
CP65	300	800	215	39	6,0	8,0	0,60	30-180	±3	M5,7-M9,5	M4,4-M7,5

OPERATIONS

- Smooth change of valve reverse (right/left) button turn direction can be done.
- Push valve reverse switch makes instantly change direction of air motor rotation.
- Push-to-Start system eliminates troublesome to press throttle lever.
- Adjusting fastening torque by loosening rear housing and adjusting torque ring:
 - ▶ Tighten to the right: increase torque. Loosen to the left: decrease torque
- Air motor will automatically stop when the load reaches at the pre-set torque.
- The Torque cover used for:
 - ▶ Colour torque system. The colour torque system gives you an easily visible torque marking system at a glance for all the R series tools. Choice the colour for each torque level used on your assembly line.
 - ▶ Torque fix system. To avoid the adjustment by operator and easy to mark the torque through the window. This up-to-the-date design let you either adjust the torque rapidly or without using the Torque Lock Nut

■ AIR SUPPLY

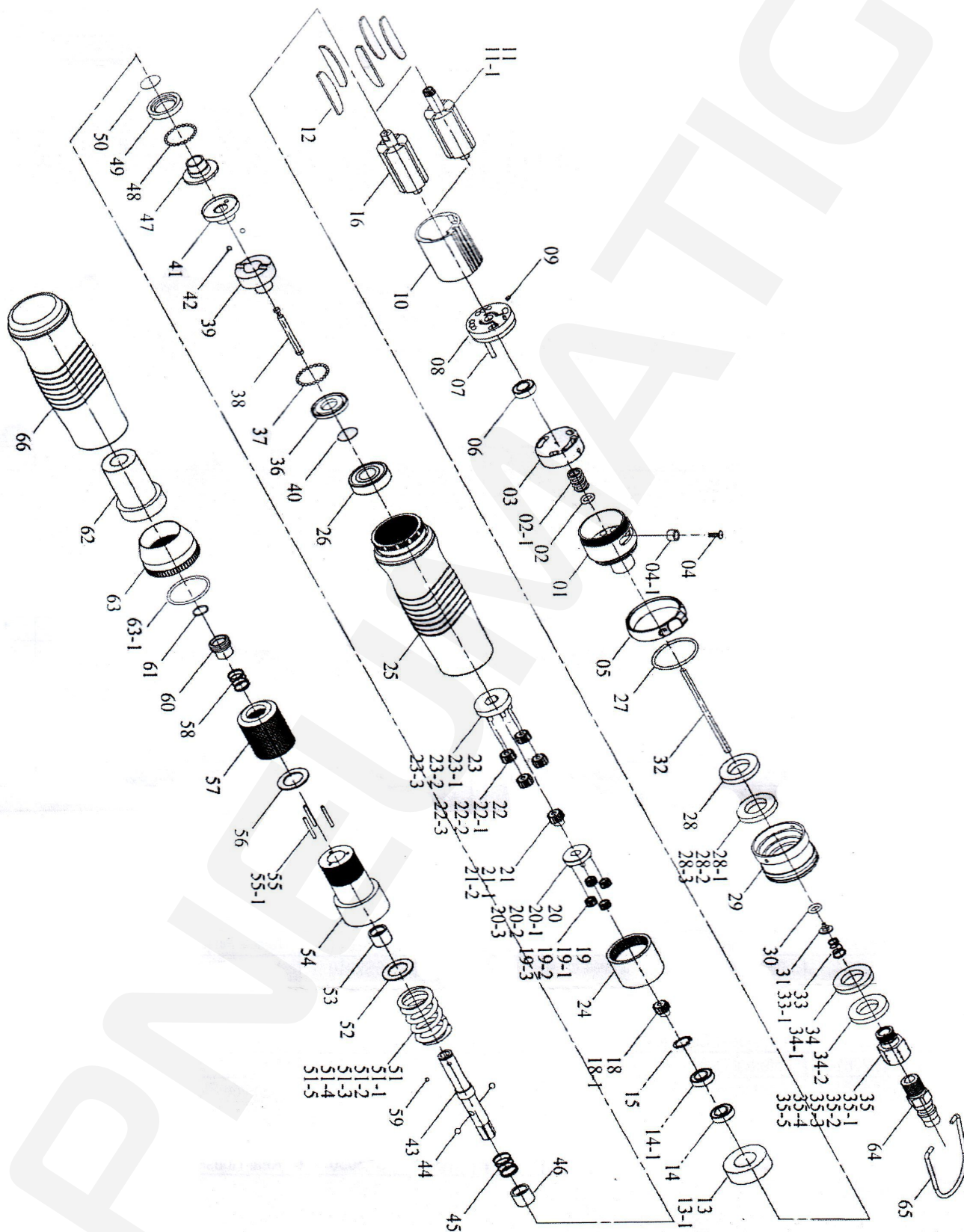
- Air tools are adversely affected by moisture. Since air from compressor contains much moisture and dust, it is desirable to provide a filter and lubricator in the pipeline to remove such undesirable elements. Also take the drain out from air tank every day.
- When using brand-new air hose or air pipe. Blow and clean the inside of air hose or pipe before installation.
- Keep inside of air hose or air pipe clean to prevent airdrop problem caused by the lots of drain and dust accumulated and possibly make the inside diameter smaller in the long use.
- When disconnect air hose from air tool while in the operation do not drop air hose end to the floor as dust or other element may come into air hose.
- Use air regulator to keep stable air pressure at 5.5kg/cm – 6.0kg/cm at the toll. It is important to get proper air pressure at the toll.
- After lubrication, oil will discharged the exhaust upon operation. Flush motor for a few seconds.

■ LUBRICATION

- Lubrication is indispensable to air tools. The most ideal maintenance is to install one lubricator to a toll for automatic oil feed, but if it is not available, manual lubrication twice every day is recommended for longer life and keeping the efficient function of mechanism.
- For manual lubrication, disconnect air hose from bushing air inlet and full up spindle oil(#40 - #60) into the air feed in take and push the bit

CP10(20)(30)(35)(38)(40)(45)

Full-Auto Shut Off Composite Screwdriver

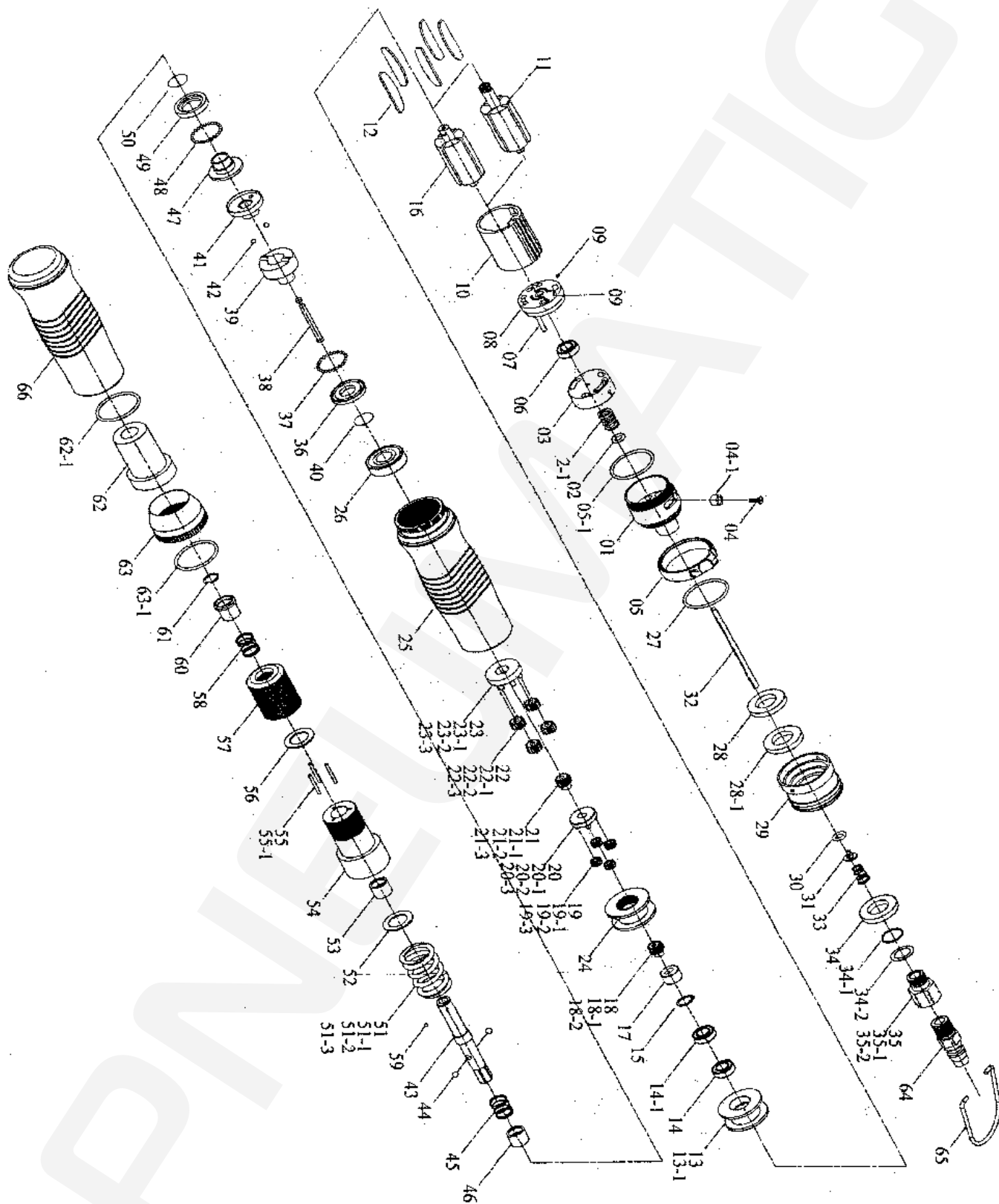


Part list CP10(20)(30)(35)(38)(40)(45)

No.	Parts No.	Description	Q'ty	No.	Parts No.	Description	Q'ty
1	5A3038	End Housing	1	31	6S2020	Valve Plate	1
2	7Q2017	Valve O-Ring	1	32	6S2004	Operating Rod	1
2-1	6N2108	Spring	1	33	6N2100	Cone Spring [CP10, CP20, CP30, CP35, CP38]	1
3	6S2203	Valve	1	33-1	6N2101	Cone Spring [CP40, CP45]	1
4	7S2108	Set Screw And Washer	1	34	2P3019	Silencer [CP10, CP20]	1
4-1	2U3001	Switch Bushing	1	34-1	2P3020	Silencer [CP30, CP35, CP38, CP40, CP45]	1
5	2L3021	Switch	1	34-2	2Q5001	O-Ring	1
6	7S2001	Ball Bearing	1	35	2S2001	Air Inlet Bushing [PT] [CP10, CP20]	1
7	6S2016	Pin	1	35-1	2S2002	Air Inlet Bushing [PT] [CP30, CP35, CP38, CP40, CP45]	1
8	1S3001	End Plate	1	35-2	2S2001-A	Air Inlet Bushing [PS] [CP10, CP20]	1
9	6S2013	Pin	1	35-3	2S3005	Air Inlet Bushing [PS] [CP30, CP35, CP38, CP40, CP45]	1
10	1P3005	Cylinder	1	35-4	2S2003	Air Inlet Bushing [NPT] [CP10, CP20]	1
11	1S3040	10T Rotor [CP10, CP20, CP40]	1	35-5	2S2004	Air Inlet Bushing [NPT] [CP30, CP35, CP38, CP40, CP45]	1
11-1	1S3041	10T Rotor [CP45]	1	36	2S2103	Retainer	1
12	1P3050	Blade	5	37	7S2102	Ball	28
13	1P3060	Front Plate [CP10, CP20, CP40, CP45]	1	38	3S2001	Pilot Pin	1
13-1	1P3065	Front Plate [CP30, CP35, CP38]	1	39	3S2211	Rear Clutch	1
14	7S2002	Ball Bearing	1	40	6N2006	C-Ring	1
14-1	7S2007	Ball Bearing	1	41	3S2215	Center Clutch	1
15	6N2020	C-Ring [CP20, CP40, CP45]	1	42	7S2112	Ball	2
16	1S3043	Rotor [CP30, CP35, CP38]	1	43	3S2021	Anvil	1
18	1G6279	18T Main Gear [CP30, CP38]	1	44	7S2105	Ball	2
18-1	1G6280	21T Main Gear [CP35]	1	45	6N2110	Spring	1
19	1P2101	15T PlanrGear[CP10, CP20, CP40]	4	46	3S2226	Slide Base	1
19-1	1P2110	12T Plant Gear [CP30, CP38]	4	47	3S2222	End Clutch	1
19-2	1P2102	10T Plant Gear [CP35]	7	48	7S2102	Ball	22
19-3	1P2120	15T Plant Gear [CP45]	4	49	3S2231	Ball Race	1
20	1P3280	Fifth Gear Cage [CP10, CP20, CP40]	1	50	6N3100	C-Ring	1
20-1	1P3274	Third Gear Cage and Main Gear [CP30, CP38]	1	51	6N3001	Torque Spring [CP10]	1
20-2	1P6294	Third Gear Cage [CP35]	1	51-1	6N3002	Torque Spring [CP20]	1
20-3	1P2283	Fifth Gear Cage and Main Gear [CP45]	1	51-2	6N3013	Torque Spring [CP30]	1
21	1P2270	18T Main Gear [CP10, CP20]	1	51-3	6N5008	Torque Spring [CP35]	1
21-1	1P2271	21T Main Gear [CP35]	1	51-4	6N3004	Torque Spring [CP38, CP40]	1
21-2	1P2090	14T Main Gear [CP40]	1	51-5	6N3005	Torque Spring [CP45]	1
22	1P2110	12T Plant Gear [CP10, CP20, CP30, CP38]	4	52	2S2120	Washer	1
22-1	1P2102	10T Plant Gear [CP35]	7	53	3S2242	Anvil Bushing	1
22-2	1P2130	14T Plant Gear [CP40]	4	54	3A2220	Clutch Housing	1
22-3	1P2121	15T Plant Gear [CP45]	4	55	6S2011	Needle Pin [CP10, CP30, CP40, CP45]	3
23	1P2284	Third Gear Cage [CP10, CP20, CP30, CP38]	1	55-1	6S2010	Needle Pin [CP20, CP35, CP38]	3
23-1	1P6297	Third Gear Cage [CP35]	1	56	3S3101	Regulation Washer	1
23-2	1P2285	Fourth Gear Cage [CP40]	1	57	3A3032	Torque Ring	1
23-3	1P2286	Fifth Gear Cage [CP45]	1	58	6N2003	Spring	1
24	1S2061	Internal Gear	1	59	7S3107	Ball	1
25	5A3024	Center Housing	1	60	5S2003	Bit Slide Sleeve	1
26	7S5003	Ball Bearing	1	61	6N2001	C-Ring	1
27	7Q2015	O-Ring	1	62	5A3501	Torque Cover	1
28	2S2104	Washer [CP45]	1	63	5A3030	Rear Housing	1
28-1	2P3011	Silencer [CP10, CP20]	2	63-1	7Q6106	O-Ring	1
28-2	2P3010	Silencer [CP30, CP35, CP38, CP40]	2	64	2U2002	Air House Nipple	1
28-3	2P3010	Silencer [CP45]	1	65	5N2005	Suspension Ring	1
29	2A3010	Exhaust Deflector	1	66	5L3002	Soft Cover	1
30	7Q2007	O-Ring	1				

CP48(50)(55)(60)(65)

Full-Auto Shut Off Composite Screwdriver



Part list CP48(50)(55)(60)(65)

No.	Parts No.	Description	Q'ty	No.	Parts No.	Description	Q'ty
1	5A6032	End Housing	1	28-1	2P3021	Silencer	1
2	7Q2011	Valve O-Ring	1	29	2A6010	Exhaust Deflector	1
2-1	6N5006	Spring	1	30	7Q2006	O-Ring	1
3	6S6105	Valve	1	31	6S2021	Valve Plate	1
4	7S2108	Set Screw And Washer	1	32	6S2005	Operating Rod	1
4-1	2U6001	Switch Bushing	1	33	6N2104	Cone Spring	1
5	2L6021	Switch	1	34	2P3010	Silencer	1
5-1	7Q6108	O-Ring	1	34-1	2Q5001	O-Ring	1
6	7S5001	Ball Bearing	1	34-2	7L0002	Washer	1
7	7S5203	Pin	1	35	2S6003	Air Inlet Bushing [PT]	1
8	1S6001	End Plate	1	35-1	2S3006	Air Inlet Bushing [PS]	1
9	7S5201	Pin	2	35-2	2S6004	Air Inlet Bushing [NPT]	1
10	1P6005	Cylinder	1	36	2S6103	Retainer	1
11	1S6040	10T Rotor [CP60]	1	37	7S2102	Ball	32
12	1P6050	Blade	5	38	3S5001	Pilot Pin	1
13	1P6064	Front Plate [CP48, CP50]	1	39	3S5211	Rear Clutch	1
13-1	1P6060	Front Plate [CP55, CP60]	1	40	6N2006	C-Ring	1
14	7S2002	Ball Bearing	1	41	3S5217	Center Clutch	1
14-1	7S2007	Ball Bearing [CP48, CP50]	1	42	7S2112	Ball	2
15	6N2020	C-Ring [CP60]	1	43	3S5021	Anvil	1
16	1S6043	5T Rotor [CP48, CP50, CP55]	1	44	7S2105	Ball	2
17	1S3050	Connect [CP55]	1	45	6N5110	Spring	1
18	1G6280	21T Main Gear [CP48]	1	46	3S2227	Slide Base	1
18-1	1G6279	18T Main Gear [CP50]	1	47	3S5221	End Clutch	1
18-2	1P2090	14T Main Gear [CP55]	1	48	7S2102	Ball	25
19	1P2102	10T Plant Gear [CP48]	7	49	3S5231	Ball Race	1
19-1	1P2110	12T Plant Gear [CP50]	4	50	6N2006	C-Ring	1
19-2	1P2130	14T Plant Gear [CP55]	4	51	6N5003	Torque Spring [CP48]	1
19-3	1P2101	15T Plant Gear [CP60]	4	51-1	6N5001	Torque Spring [CP50]	1
20	1P6294	Third Gear Cage [CP48]	1	51-2	6N5002	Torque Spring [CP55]	1
20-1	1P2280	Third Gear Cage [CP50]	1	51-3	6N5004	Torque Spring [CP60]	1
20-2	1P2290	Fourth Gear Cage [CP55]	1	52	2S5120	Washer	1
20-3	1P3281	Fifth Gear Cage [CP60]	1	53	3S2240	Anvil Bushing	1
21	1G6271	21T Main Gear [CP48]	1	54	3A5201	Clutch Housing	1
21-1	1G6270	15T Main Gear [CP50]	1	55	6S2010	Needle Pin [CP48, CP50, CP55]	3
21-2	1G6090	14T Main Gear [CP55]	1	55-1	6S2012	Needle Pin [CP60]	3
21-3	1G6084	10T Main Gear [CP60]	1	56	3S5101	Regulation Washer	1
22	1P6111	10T Plant Gear [CP48]	7	57	3A6031	Torque Ring	1
22-1	1P6110	12T Plant Gear [CP50]	4	58	6N2103	Spring	1
22-2	1P6130	14T Plant Gear [CP55]	4	59	7S3107	Ball	1
22-3	1P6121	15T Plant Gear [CP60]	4	60	5S2003	Bit Slide Sleeve	1
23	1P6296	Third Gear Cage [CP48]	1	61	6N2001	C-Ring	1
23-1	1P6287	Third Gear Cage [CP50]	1	62	5A6501	Torque Cover [Black]	1
23-2	1P6288	Fourth Gear Cage [CP55]	1	62-1	7Q6105	O-Ring	1
23-3	1P6289	Fifth Gear Cage [CP60]	1	63	5A6036	Rear Housing	1
24	1S6061	Internal Gear	1	63-1	7Q6106	O-Ring	1
25	5A6034	Center Housing	1	64	2U2002	Air House Nipple	1
26	7S6003	Ball Bearing	1	65	5N2005	Suspension Ring	1
27	202003	O-Ring	1	66	5L6002	Soft Cover [Blue]	1
28	2S2104	Washer	1				