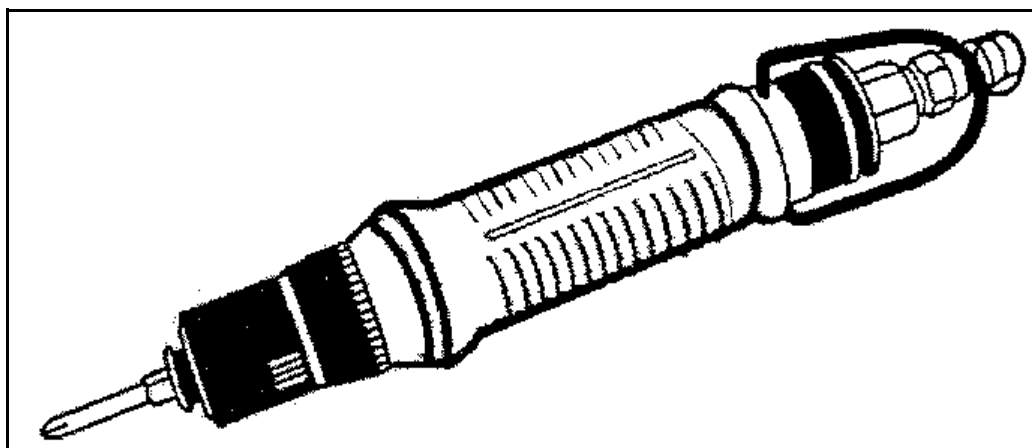


CE

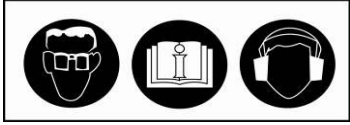
SUMAKE®

**PNEUMATIC
TOOLS**



**Full-Auto Shut Off Air Composite Screwdriver
HP**

Test results according to EN 792-6:2000+A1:2008

MODEL	Vibration EN 28662-1 & EN ISO 28927-2	Noise : EN ISO 15744:2008		Safety instructions
		Sound pressure level		
HP10	0.4 m/s ²	8 dB(A)		1-Read this manual and understand all safety instructions before operating the tool 2-Wear an approved ear-protector and gloves while operating the tool 
HP20	0.9 m/s ²	75 dB(A)		
HP30	0.9 m/s ²	75 dB(A)		
HP35	0.9 m/s ²	75 dB(A)		
HP38	0.9 m/s ²	75 dB(A)		
HP40	0.9 m/s ²	75 dB(A)		
HP45	1.1 m/s ²	73 dB(A)		
HP48	0.8 m/s ²	77dB(A)		
HP50	0.8 m/s ²	77dB(A)		
HP55	1.0 m/s ²	76dB(A)		
HP60	0.9 m/s ²	77dB(A)		
HP65	0.9 m/s ²	77dB(A)		

EC DECLARATION OF CONFORMITY FOR MACHINERY

Manufacturer: SUMAKE INDUSTRIAL CO.,LTD.

Address: 4F,-NO. 351, YANGGUANG ST., NEIHU DISTRICT
TAIPEI CITY 114, TAIWAN

**Herewith declares
that :**

**HP10(20)(30)(35)(38)(40)(45)
HP48(50)(55)(60)(65)
Full-Auto Shut Off Air Composite
Screwdriver**

- is in conformity with the provisions of the Machinery Directive (Directive 2006/42/EC), as amended, and with national implementing legislation:

- and have been tested according to:

EN ISO 12100-1:2003/A1:2009, EN ISO 12100-2:2003/A1:2009
EN 792-6:2000+A1:2008

Taipei, Taiwan

Apr. / 2 / 2010



.....
Signature

MIKE SU

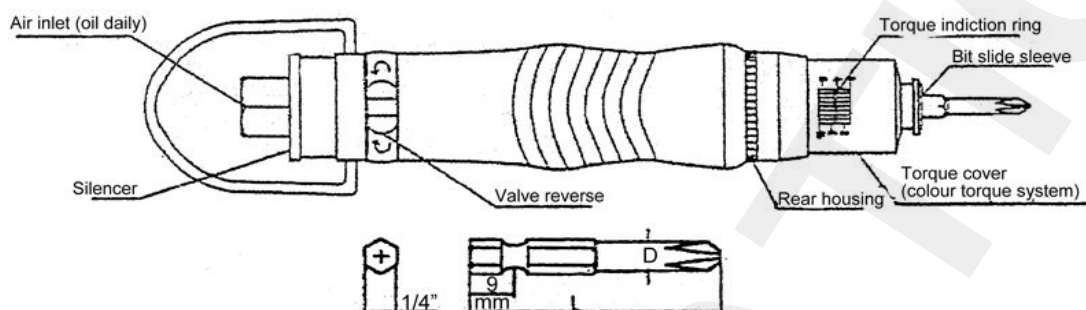
.....
Full name

HP Air Screwdrivers Operator's Manual



WARNING!

For safe use, Please Follow the instructions. The operation without your local regulations may cause serious injury. Read thoroughly and understand this instruction manual and keep this within reach for future reference.



CLASSIFIED CAPACITY SPECIFICATIONS

Model	Free speed	Weight	Overall length	Dia.	Air pressure	Min. air hose bore	Air consumption	Torque range	Standard deviation	Fastening capacity	
	r.p.m.									g	mm
HP10	1000	480	180	31	6,0	5,0	0,20	0,5-2	±3	M1,0-M2,2	M1,1-M1,7
HP20	1000	480	180	31	6,0	5,0	0,20	1-8	±3	M1,7-M3,3	M1,3-M2,7
HP30	1800	480	180	31	6,0	5,0	0,28	3-17	±3	M2,2-M4,2	M1,7-M3,2
HP35	2200	480	180	31	6,0	5,0	0,28	3-20	±3	M2,4-M4,5	M2,0-M3,5
HP38	1800	480	180	31	6,0	5,0	0,28	3-25	±3	M2,2-M4,4	M1,6-M3,4
HP40	1000	480	180	31	6,0	6,35	0,28	5-30	±3	M2,8-M5,0	M2,3-M4,0
HP45	800	450	180	31	6,0	8,0	0,30	8-40	±3	M3,0-M5,7	M2,7-M4,7
HP48	1800	790	215	39	6,0	8,0	0,55	5-45	±3	M2,8-M5,8	M2,3-M4,7
HP50	1400	790	215	39	6,0	8,0	0,55	7-50	±3	M2,9-M6,0	M2,6-M4,9
HP55	1000	790	215	39	6,0	8,0	0,55	7-65	±3	M2,9-M6,4	M2,6-M5,4
HP60	550	790	215	39	6,0	8,0	0,55	15-95	±3	M4,1-M7,0	M3,3-M6,0
HP65	300	800	215	39	6,0	8,0	0,60	30-180	±3	M5,7-M9,5	M4,4-M7,5

OPERATIONS

- Smooth change of valve reverse (right/left) button turn direction can be done.
- Push valve reverse switch makes instantly change direction of air motor rotation.
- Push-to-Start system eliminates troublesome to press throttle lever.
- Adjusting fastening torque by loosening rear housing and adjusting torque ring:
 - ▶ Tighten to the right: increase torque. Loosen to the left: decrease torque
- Air motor will automatically stop when the load reaches at the pre-set torque.
- The Torque cover used for:
 - ▶ Colour torque system. The colour torque system gives you an easily visible torque marking system at a glance for all the R series tools. Choice the colour for each torque level used on your assembly line.
 - ▶ Torque fix system. To avoid the adjustment by operator and easy to mark the torque through the window. This up-to-the-date design let you either adjust the torque rapidly or without using the Torque Lock Nut

■ **AIR SUPPLY**

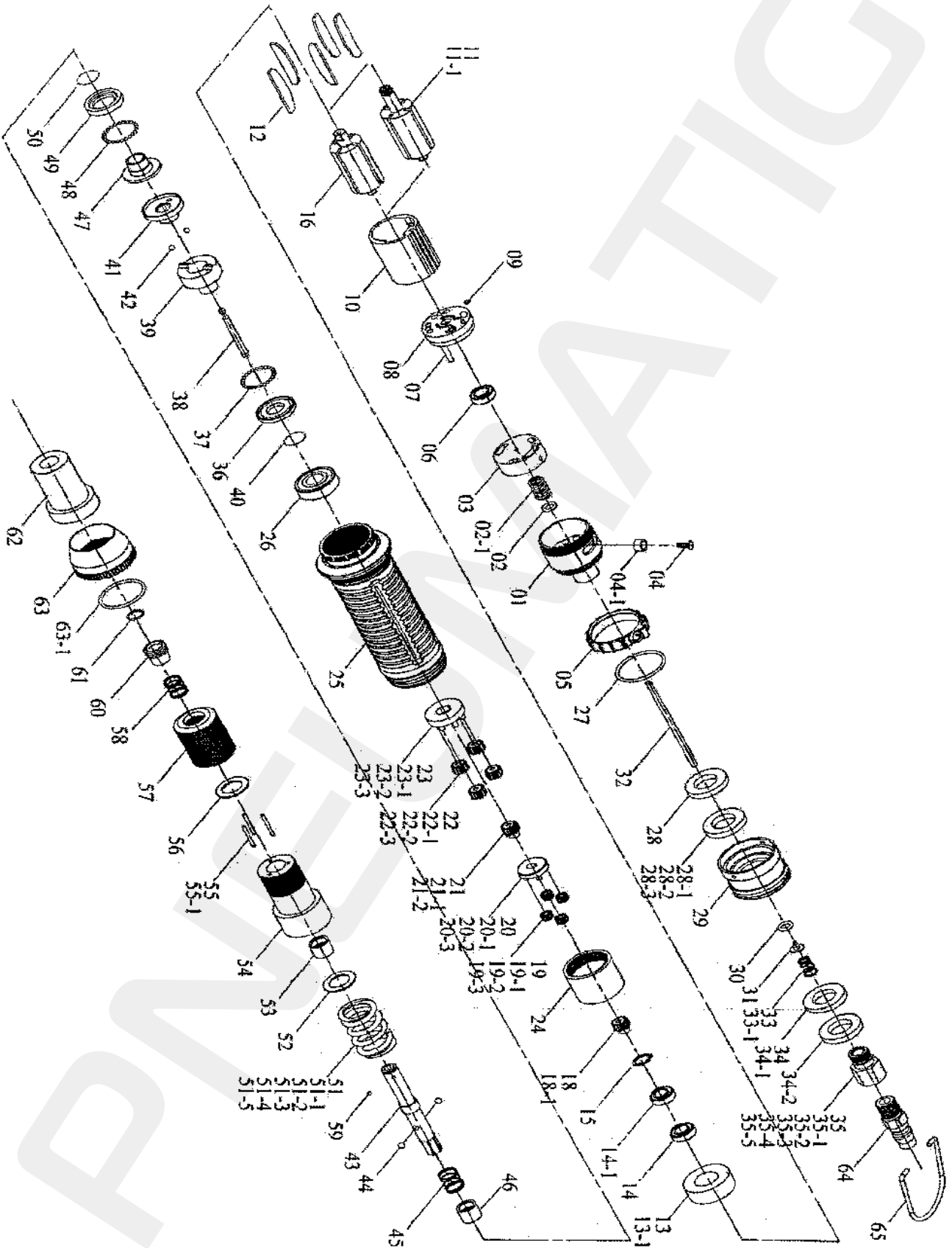
- Air tools are adversely affected by moisture. Since air from compressor contains much moisture and dust, it is desirable to provide a filter and lubricator in the pipeline to remove such undesirable elements. Also take the drain out from air tank every day.
- When using brand-new air hose or air pipe. Blow and clean the inside of air hose or pipe before installation.
- Keep inside of air hose or air pipe clean to prevent airdrop problem caused by the lots of drain and dust accumulated and possibly make the inside diameter smaller in the long use.
- When disconnect air hose from air tool while in the operation do not drop air hose end to the floor as dust or other element may come into air hose.
- Use air regulator to keep stable air pressure at 5.5kg/cm – 6.0kg/cm at the toll. It is important to get proper air pressure at the toll.
- After lubrication, oil will discharged the exhaust upon operation. Flush motor for a few seconds.

■ **LUBRICATION**

- Lubrication is indispensable to air tools. The most ideal maintenance is to install one lubricator to a toll for automatic oil feed, but if it is not available, manual lubrication twice every day is recommended for longer life and keeping the efficient function of mechanism.
- For manual lubrication, disconnect air hose from bushing air inlet and full up spindle oil(#40 - #60) into the air feed in take and push the bit.

HP10(20)(30)(35)(38)(40)(45)

Full-Auto Shut Off Composite Screwdriver

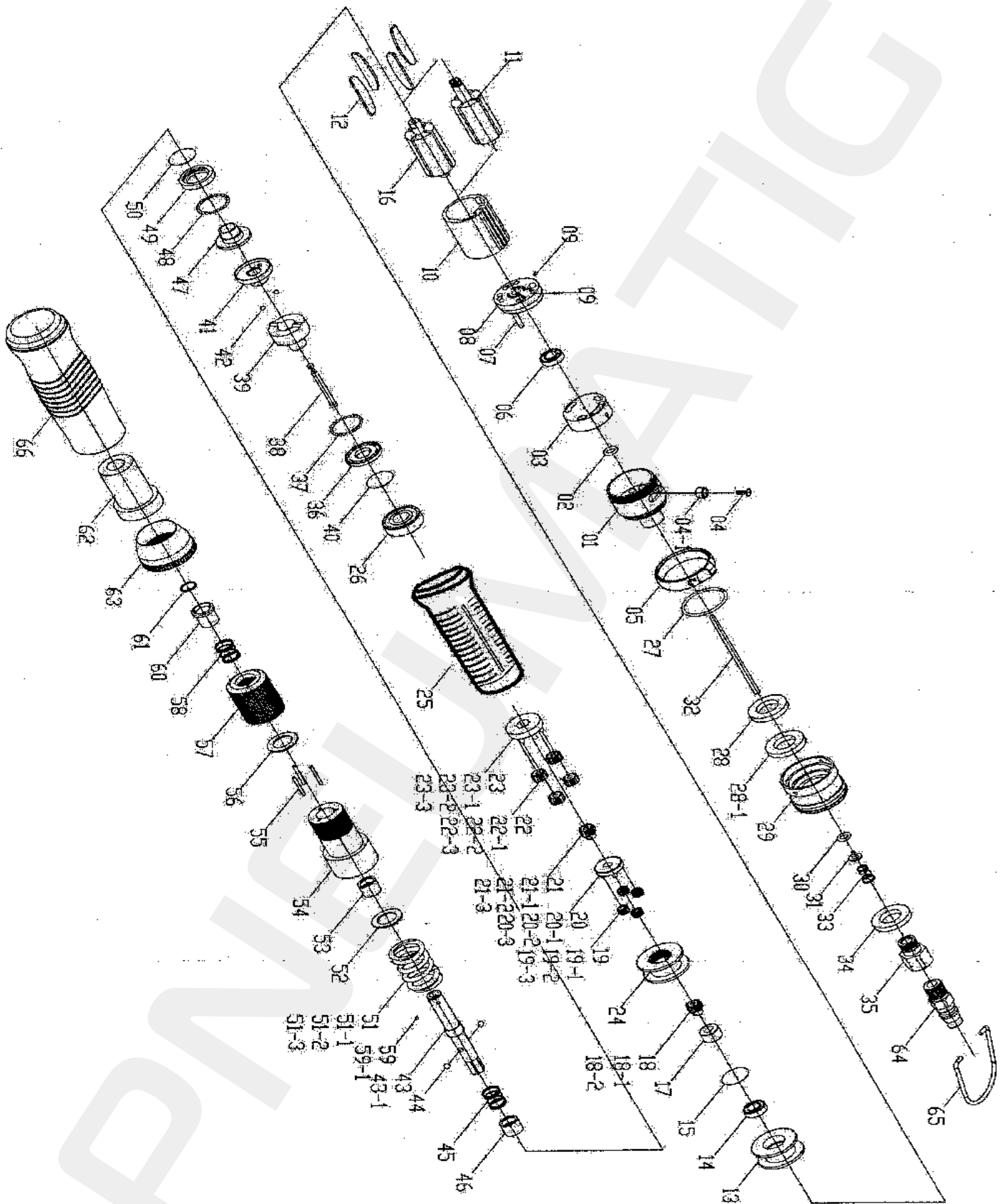


Part list HP10(20)(30)(35)(38)(40)(45)

Lp.	Nr.części	Opis	Ilość	Lp.	Nr.części	Opis	Ilość
1	5A3038	End Housing	1	30	7Q2007	O-Ring	1
2	7Q2017	Valve O-Ring	1	31	682020	Valve Plate	1
2-1	6N2108	Spring	1	32	6S2004	Operating Rod	1
3	6S2203	Valve	1	33	6N2100	Cone Spring [HP10, HP20, HP30, HP35, HP38]	1
4	7S2108	Set Screw And Washer	1	33-1	6N2101	Cone Spring [HP40, HP45]	1
4-1	2U3001	Switch Bushing	1	34	2P3019	Silencer [HP10, HP20]	1
5	5L2004	Switch [Black]	1	34-1	2P3020	Silencer [HP30, HP35, HP38, HP40, HP45]	1
6	7S2001	Ball Bearing	1	34-2	2Q5001	O-Ring	1
7	6S2016	Pin	1	35	2S2001	Air Inlet Bushing [PT][HP10, HP20]	1
8	1S3001	End Plate	1	35-1	2S2002	Air Inlet Bushing [PT][HP30, HP35, HP38, HP40, HP45]	1
9	6S2013	Pin	1	35-2	2S2001-A	Air Inlet Bushing [PS][HP10, HP20]	1
10	1P3005	Cylinder	1	35-3	2S3005	Air Inlet Bushing [PS][HP30, HP35, HP38, HP40, HP45]	1
11	1S3040	10T Rotor [HP10, HP20, HP40]	1	35-4	2S2003	Air Inlet Bushing [NPT][HP10, HP20]	1
11-1	1S3041	10T Rotor [HP45]	1	35-5	2S2004	Air Inlet Bushing [NPT][HP30, HP35, HP38, HP40, HP45]	1
12	1P3050	Blade	5	36	2S2103	Retainer	1
13	1P3060	Front Plate [HP10, HP20, HP40, HP45]	1	37	7S2102	Ball	28
13-1	1P3065	Front Plate [HP30, HP35, HP38]	1	38	3S2001	Pilot Pin	1
14	7S2002	Ball Bearing	1	39	3S2211	Rear Clutch	1
14-1	7S2007	Ball Bearing [HP30, HP35, HP38]	1	40	6N2006	C-Ring	1
15	6N2020	C-Ring [HP10, HP20, HP40, HP45]	1	41	382215	Center Clutch	1
16	1S3043	Rotor [HP30, HP35, HP38]	1	42	782112	Ball	2
18	1G6279	18T Main Gear [HP30, HP38]	1	43	382021	Anvil	1
18-1	1G6280	21T Main Gear [HP35]	1	44	782105	Ball	2
19	1P2101	15T Plant Gear [HP10, HP20, HP40]	4	45	6N2110	Spring	1
19-1	1P2110	12T Plant Gear [HP30, HP38]	4	46	3S2226	Slide Base	1
19-2	1P2102	10T Plant Gear [HP35]	7	47	3S2222	End Clutch	1
19-3	1P2120	15T Plant Gear [HP45]	4	48	7S2102	Ball	22
20	1P3280	Fifth Gear Cage [HP10, HP20, HP40]	1	49	3S2231	Ball Race	1
20-1	1P3274	Third Gear Cage [HP30, HP38]	1	50	6N3100	C-Ring	1
20-2	1P6294	Third Gear Cage [HP35]	1	51	6N3001	Torque Spring [HP10]	1
20-3	1P2283	Fifth Gear Cage [HP45]	1	51-1	6N3002	Torque Spring [HP20]	1
21	1P2270	18T Main Gear [HP10, HP20]	1	51-2	6N3013	Torque Spring [HP30]	1
21-1	1P2271	21T Main Gear [HP35]	1	51-3	6N5008	Torque Spring [HP35]	1
21-2	1P2090	14T Main Gear [HP40]	1	51-4	6N3004	Torque Spring [HP38, HP40]	1
22	1P2110	12T Plant Gear [HP10, HP20, HP30, HP38]	4	51-5	6N3005	Torque Spring [HP45]	1
22-1	1P2102	10T Plant Gear [HP35]	7	52	2S2120	Washer	1
22-2	1P2130	14T Plant Gear [HP40]	4	53	3S2242	Anvil Bushing	1
22-3	1P2121	15T Plant Gear [HP45]	4	54	3A2220	Clutch Housing	1
23	1P2284	Third Gear Cage [HP10, HP20, HP30, HP38]	1	55	6S2011	Needle Pin [HP10, HP30, HP40, HP45]	3
23-1	1P6297	Third Gear Cage [HP35]	1	55-1	6S2010	Needle Pin [HP20, HP35, HP38]	3
23-2	1P2285	Fourth Gear Cage [HP40]	1	56	3S3101	Regulation Washer	1
23-3	1P2286	Fifth Gear Cage [HP45]	1	57	3A3032	Torque Ring	1
24	1S2061	Internal Gear	1	58	6N2003	Spring	1
25	5A3033	Center Housing	1	59	7S3107	Ball	1
26	7S5003	Ball Bearing	1	60	5S2003	Bit Slide Sleeve	1
27	7Q2015	O-Ring	1	61	6N2001	C-Ring	1
28	2S2104	Washer [HP451]	1	62	5A3501	Torque Cover	1
28-1	2P3011	Silencer [HP10, HP20]	2	63	5A3030	Rear Housing	1
28-2	2P3010	Silencer [HP30, HP35, HP38, HP40]	2	63-1	7Q6106	O-Ring	1
28-3	2P3010	Silencer [HP45]	1	64	2U2002	Air House Nipple	1
29	2A3010	Exhaust Deflector	1	65	5N3002	Suspension Ring	1

HP48(50)(55)(60)

Full-Auto Shut Off Composite Screwdriver



Part list HP48(50)(55)(60)

Lp.	Nr.części	Opis	Ilość	Lp.	Nr.części	Opis	Ilość
1	HP50-01C	End Housing	1	28	HP50-28C	First Silencer	1
2	HP50-02C	O-Ring [P-10]	1	28-1	HP50-28C-1	Washer	1
3	HP50-03C	Valve	1	29	HP50-29C	Exhaust Deflector	1
4	HP50-04C	Set Screw [M2.6x8]	1	30	HP50-30C	O-Ring [3.5x2]	1
4-1	HP50-04C-1	Switch Bushing	1	31	HP50-31C	Valve Plant	1
5	HP50-05C	Switch	1	32	HP50-32C	Operating Rod	1
6	HP50-06C	Ball Bearing [697ZZ]	1	33	HP50-33C	Cone Spring	1
7	HP50-07C	End Plate	1	34	HP50-34C	Second Silencer	1
8	HP50-08C	Roll Pin [2.0x18]	1	35	HP50-35C	Air Inlet Bushing	1
9	HP50-09C	Roll Pin [2.1 x7]	2	36	HP50-36C	Retainer	1
10	HP50-10C	Cylinder	1	37	HP50-37C	Ball [2.0]	28
11	HP60-11C	Rotor [HP60]	1	38	HP50-38C	Pilot Pin	1
12	HP50-12C	Blade	5	39	HP50-39C	Rear Clutch	1
13	HP50-13C	Front Plate	1	40	HP50-40C	Snap Ring	1
14	HP50-14C	Ball Bearing [688ZZ]	1	41	HP50-41C	Center Clutch	1
15	HP50-15C	E-Ring	1	42	HP50-42C	Ball [1/8]	2
16	HP50-16C	Rotor [HP48, HP50, HP55]	1	43	HP50-43C	Anvil [6.35Hex]	1
17	HP50-17C	Connect [HP48, HP50, HP55]	1	43-1	HP50-43C-1	Anvil [5.0Hex]	1
18	HP50-18C	First Main Gear [HP50]	1	44	HP50-44C	Balls [4.0]	2
18-1	HP55-18C	First Main Gear [HP55]	1	45	HP50-45C	Spring [0.8x10.2x16.0]	1
18-2	HP48-18C	First Main Gear [HP48]	1	46	HP50-46C	Slide Base	1
19	HP50-19C	First Plant Gear [HP50]	4	47	HP50-47C	End Clutch	1
19-1	HP55-19C	First Plant Gear [HP55]	4	48	HP50-48C	Ball [2.0]	28
19-2	HP60-19C	First Plant Gear [HP60]	4	49	HP50-49C	Ball Race	1
19-3	HP48-19C	First Plant Gear [HP48]	4	50	HP50-50C	Snap Ring	1
20	HP50-20C	First Gear Cage [HP50]	1	51	HP50-51C	Torque Spring [3.5- HP50]	1
20-1	HP55-20C	First Gear Cage [HP55]	1	51-1	HP55-51C	Torque Spring [3.6- HP55]	1
20-2	HP60-20C	First Gear Cage [HP60]	1	51-2	HP60-51C	Torque Spring [3.8- HP60]	1
20-3	HP48-20C	First Gear Cage [HP48]	1	51-3	HP48-49C	Torque Spring [3.4- HP48]	1
21	HP50-21C	Second Main Gear [HP50]	1	52	HP50-52C	Washer [22.2x14.2]	1
21-1	HP55-21C	Second Main Gear [HP55]	1	53	HP50-53C	Anvil Bushing	1
21-2	HP60-21C	Second Main Gear [HP60]	1	54	HP50-54C	Clutch Housing	1
21-3	HP48-21C	Second Main Gear [HP48]	1	55	HP50-55C	Needle Pin	3
22	HP50-22C	Second Plant Gear [HP50]	3	56	HP50-56C	Regulation Washer	1
22-1	HP55-22C	Second Plant Gear [HP55]	3	57	HP50-57C	Torque Ring	1
22-2	HP60-22C	Second Plant Gear [HP60]	3	58	HP50-58C	Spring [0.6x10.2x18.0]	1
22-3	HP48-22C	Second Plant Gear [HP48]	3	59	HP50-59C	Ball [2.38-B]	1
23	HP50-23C	Second Gear Cage [HP50]	1	59-1	HP50-59C-1	Ball [3.0-A]	1
23-1	HP55-23C	Second Gear Cage [HP55]	1	60	HP50-60C	Bit Slide Sleeve	1
23-2	HP60-23C	Second Gear Cage [HP60]	1	61	HP50-61C	Snap Ring	1
23-3	HP48-23C	Second Gear Cage [HP48]	1	62	HP50-62C	Torque Cover	1
24	HP50-24C	Internal Gear	1	63	HP50-63C	Rear Housing	1
25	HP50-25C	Center Housing	1	64	HP50-64C	Air Housing Nipple	1
26	HP50-26C	Ball Bearing [6001ZZ]	1	65	HP50-65C	Suspension Ring	1
27	HP50-27C	O-Ring [28x1.5]	1	66	HP50-66C	Soft Cover B (Rubber)	1