

CE

SUMAKE®

**PNEUMATIC  
TOOLS**



## 1/2" Heavy Duty Air Ratchet Wrench ST-55525

### SPECIFICATION

Free Speed (rpm)	225
Square Drive (inch)	1/2"
Bolt Capacity (inch)	1/2"
Air Consumption (cfm)	4
Max Torque(ft-lb/Nm)	100 / 136
Air Hose	3/8"
Air Inlet	1/4"
Overall Length (mm)	205
Air Pressure (bar)	6.3
Net Weight (kgs)	1.62

Vibration EN28662-1 EN ISO 28927-2	Noise EN ISO 15744:2008	Remark
No-load:  2.2 m/s <sup>2</sup>	Sound pressure level 94.31 dB Sound power level 105.31 dB Instantaneous sound pressure 93.7 dB	Should wear an approved ear - protector and gloves while operating tool.

# EC DECLARATION OF CONFORMITY FOR MACHINERY

**Manufacturer:** SUMAKE INDUSTRIAL CO.,LTD.

**Address:** 4F,-NO. 351, YANGGUANG ST., NEIHU DISTRICT  
TAIPEI CITY 114, TAIWAN

**herewith declares  
that:**

**1/2" Heavy Duty  
Air Ratchet Wrench  
ST-55525**

- is in conformity with the provisions of the Machinery Directive (Directive 2006/42/EC), as amended, and with national implementing legislation:

-and have been tested according to:  
EN ISO 12100-1:2003/A1:2009, EN ISO 12100-2:2003/A1:2009, EN 792-6:2000+A1:2008

Taipei, Taiwan                      Apr   /   2     /   2010



.....  
Signature

**MIKE SU**

.....  
Full name

# Foreword

Sumake is a manufacturer and exporter of air tools since established. We have devote all our effort in improving quality and tools life. As well as the noise and vibration of tools. Bring all of your working efficiency, profits and enjoy using the tool is our principle.

## Operator's instruction

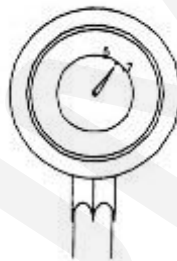
### ■ 1. Main Applications

The ideal tool for the mechanic who can't afford downtime. Its dramatically longer life, combined with a powerful motor and comfortable ergonomic design, make it the best choice for work on exhaust systems, small engines, water pumps, fuel pumps, and radiator and air conditioner removal and replacement.

### ■ 2. Cautions for Use

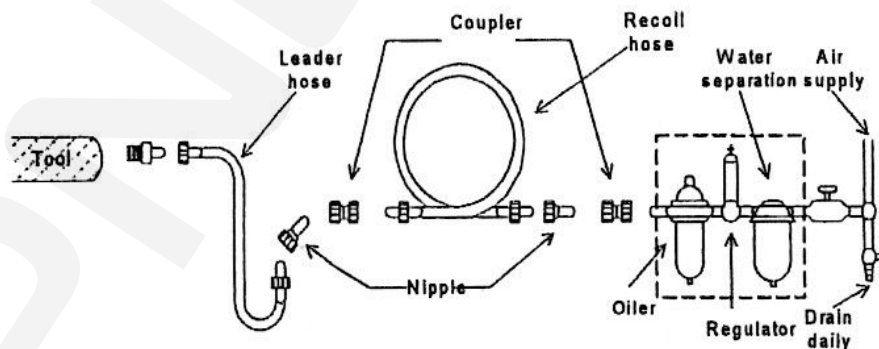
#### ● 2-1 Air pressure

Maximum performance is displayed at the proper sanding speed, obtainable at a gauge pressure of 6.2 bar. Range-wise, this is an air pressure from 5 to 7 bar (70 to 100 psi)



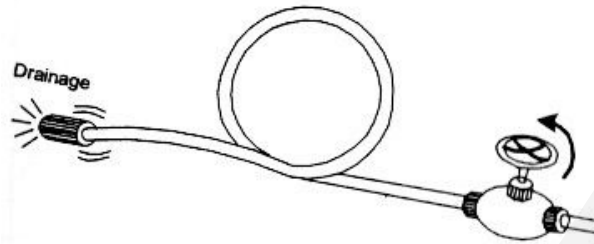
#### ● 2-2 Air line

Use a 3/4" air hose between the compressor and the tool. Compressed air is cooled and its water content separated, as soon as the air leaves the compressor. A portion of the water content, however, is condensed in the piping, and can enter the tool mechanism, and may cause trouble. So, install an air filter and an oiler between the compressor and the tool. Use a 3HP or larger compressor.



### ● 2-3 Air hose

Clean the hose with a blast of compressed air before connecting the hose to air tool. This will prevent both moisture and dust within the hose from entering the tool and causing possible rust or malfunction. To compensate for unusually long hose (over 25 ft), the line pressure should be increased accordingly.



### ● 2-4 Inserted tools

Use only the socket or adapter which are in good condition for use. The intended socket and adapter for this air tool could be started as "Square Drive" on the specification list.

- 2-5 The approved eye protector, ear-muff, mouth-muffle, and gloves shall be worn when operate this tool.
- 2-6 The working place shall be ventilative.
- 2-7 Release the on-off device in the case of energy supply failure.

## ■ 3. Operation Method

### ● 3.1 On-off device

The on-off device is on the inner or outer contour of the grip. It is a "hold-to-run" type. This tool stops rotation within few sec, after releasing the lever. For the sake of safety, place it on a level plate or on hanger after it completely stops.

### ● 3.2 Torque Adjuster

You can adjust the torque by rotating the knob which indicated by 1 to 6. "1" indicates the smallest torque output and "6" indicates the largest torque output.

### ● 3.3 Rotating Direction

One shall make sure the direction of rotation before actuate this tool. The "F" indicates forward and the "R" indicates reverse. Forward is defined as clockwise direction seen from the operator's position.

## ■ 4. Maintenance

### ● 4-1 Lubrication

Before connecting the hose, apply 4 or 5 drops of #60 spindle oil at the air inlet. Use of a thicker oil can lead to reduced performance or malfunction. If a thicker oil is used by accident, wash it away immediately. Also, every 3 or 4 hours of operation, oiling is necessary.

### ● 4-2 Storage

Avoid storing the tool in a location subject to high humidity. If the tool is left as it is used, the residual moisture inside the tool can cause rust. Before storing and after operation, oil the tool at the air inlet with spindle oil and run it for short time.

### ● 4-3 Disposal

If the tool is too seriously damaged to be used any more, drop it in a resource recycling can. Never drop it into fire.

### ● 4-4 Ordering service Parts

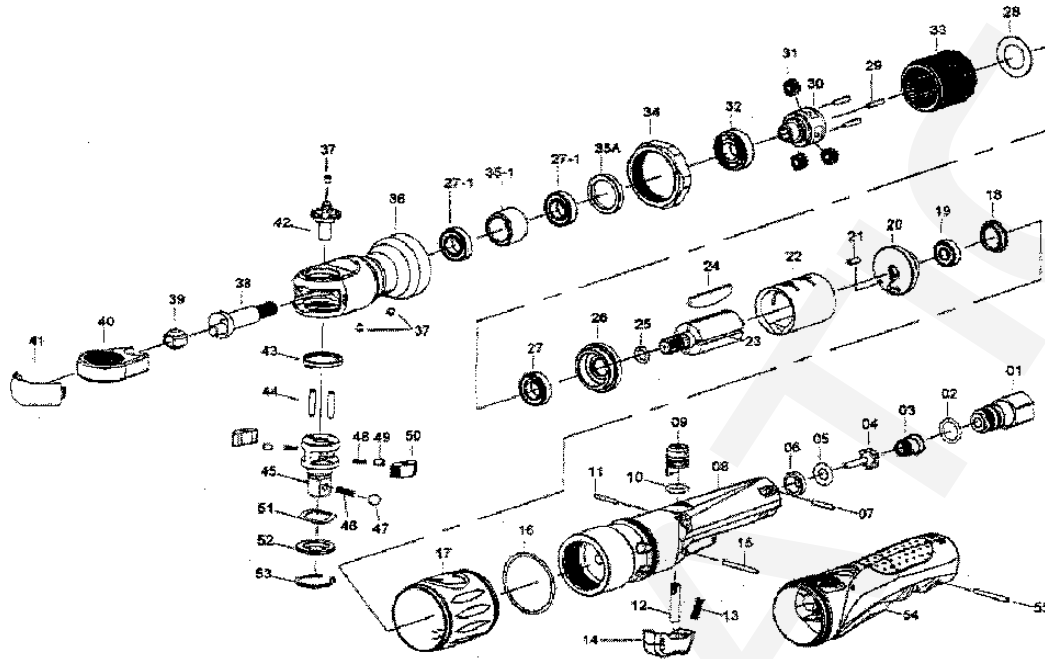
For further operational and handling information or of replacement of parts and components, contact the sale agent from whom you purchased the tool or the service division of our company.

*\* In ordering parts and components, give each part number, name and quantity.*

## Warning

- 1.The power tool shall not be used in potentially explosive atmospheres.
- 2.Disconnect the air hose before changing or adjusting any inserted tools.
- 3.Prevent long hair or loose clothing from drawing in while operate this tool.
- 4.Keep your body in well balanced position and always wear gloves to reduce the risk of crushing caused by torque between handle and workpiece.
- 5.Unexpected direction of rotating could cause a hazardous situation.
- 6.Slip/Trip/Fall is a major reason of serious injury or death. Beware of excess hose left on the walking or work surface.
- 7.Wearing eye/face protector could reduce the danger to person from high speed splinters being emitted from this tool in the case of inserted tool failure or emitted from workpiece
- 8.Wearing mouth-muff could avoid inhaling dust or handling debris from work process that can be harmful to your health.
- 9.Excessive high air pressure and too much free rotation may speed the wear of this tool and might cause danger situation.

# ST-55525 1/2" HEAVY DUTY AIR RATCHET WRENCH



## PARTS LIST

No.	Parts No.	Description	Q'ty	No.	Parts No.	Description	Q'ty
01	55524-01	Inlet Bushing	1	30	55524-30	Spindle [Incl. 29(3)]	1
02	55524-02	Swivel Inlet O-Ring	1	31	55524-31	Spindle Planet Gear	3
03	55524-03	Throttle Valve Spring	1	32	55524-32	Bearing	1
04	55524-04	Throttle Valve	1	33	55524-33	Internal Gear	1
05	55524-05	Throttle Valve O-Ring	1	34	55524-34	Coupling Nut	1
06	55524-06	Throttle Valve Seat	1	35A	55524-35A	Bushing Spacer	1
07	55524-07	Swivel Inlet Retaining Pin (Short)	1	35-1	55524-35-1	Bushing	1
08	55524-08	Motor Housing	1	36	55524-36	Ratchet Housing [Incl. 37(2)]	1
09	55524-09	Power Regulator	1	37	55524-37	Grease Fitting	3
10	55524-10	Power Regulator O-Ring	1	38	55524-38	Crankshaft	1
11	55524-11	Power Regulator Pin	1	39	55524-39	Drive Bushing	1
12	55524-12	Throttle Valve Plunger	1	40	55524-40	Ratchet Yoke	1
13	55524-13	Trigger Spring	1	41	55524-41	Ratchet Housing Cover	1
14	55524-14	Trigger	1	42	55524-42	Reverse Button [Incl. 37]	1
15	55524-15	Trigger Pin	1	43	55524-43	Wear Washer	1
16	55524-16	Exhaust Deflector Seal	1	44	55524-44	Pawl Retaining Pin	2
17	55524-17	Exhaust Deflector	1	45	55525-45	Ratchet Anvil 1/2" [Incl. 46, 47]	1
18	55524-18	End Cap	1	48	55524-48	Ratchet Lock Spring	2
19	55524-19	Rear Rotor Bearing	1	49	55524-49	Ratchet Lock Pin	2
20	55524-20	Rear End Plate	1	50	55524-50	Ratchet Pawl	2
21	55524-21	End Plate Dowel	1	51	55524-51	Friction Washer	1
22	55524-22	Cylinder	1	52	55524-52	Thrust Washer	1
23	55524-23	Rotor	1	53	55524-53	Retaining Ring	1
24	55524-24	Vane Packet	4	54	55524-54	Composite Outer Housing	1
25	55524-25	Rotor Seal	1	55	55524-55	Swivel Inlet Retaining Pin (Long)	1
26	55524-26	Front End Plate	1	TK1	55524-TK1	Ratchet Housing Bearing Repair Kit 27-1(2)	
27	55524-27	Front Rotor Bearing	1	TK2	55524-TK2	Crank Shaft Mechanism Kit [Incl. 38,39, 40, 41]	
27-1	55524-27-1	Ratch Housing Bearing	2	TK3	55524-TK3	Motor Tune-UP Kit [Incl. 02, 03, 04, 05, 07, 10, 11, 55]	
28	55524-28	Spacer	1	TK4	55524-TK4	1/2" Ratchet Head Repair Kit [Incl. 37(1), 42, 43, 44(2), 45, 46, 47, 48, 49, 50(2), 51, 52, 53]	
29	55524-29	Spindle Planet Gear Shaft [Incl. 30]	3				